

MONTHLY MEMBERSHIP PROGRESS REPORT

LOCATION ONTARIO

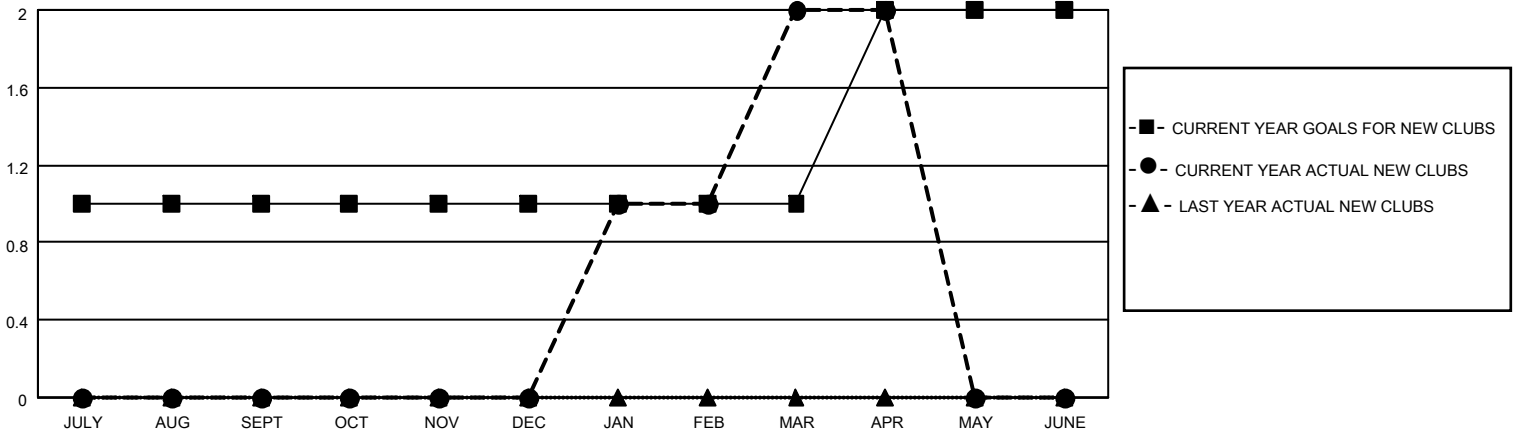
District A 3

Results as of: 4/30/2021

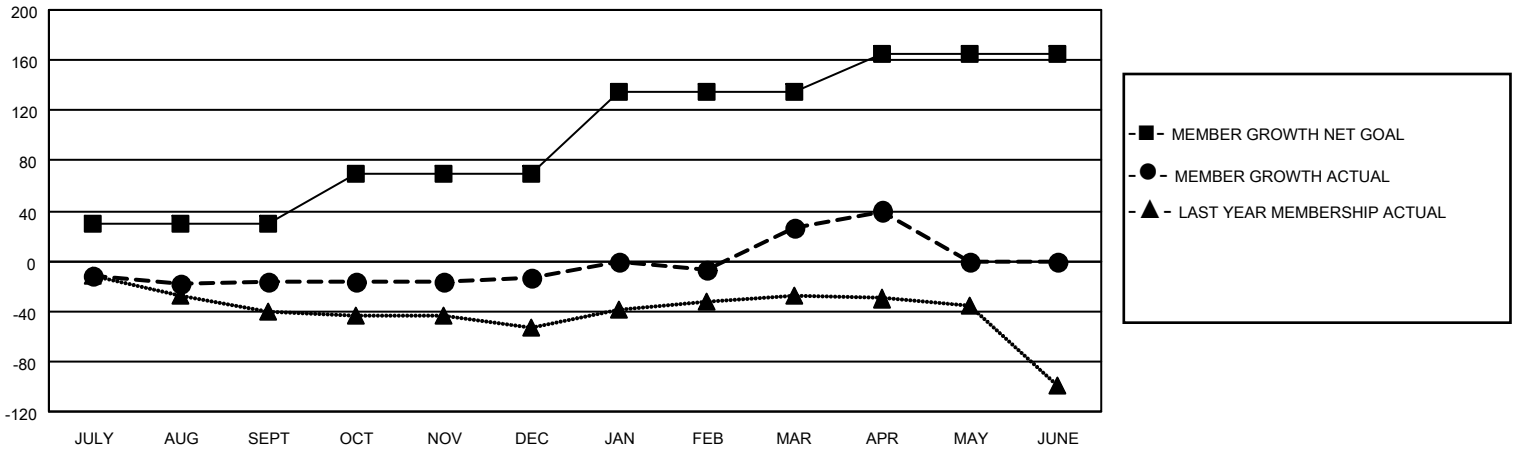
Clubs			
RESULTS FOR 2020-2021			
QUARTER	NEW CLUB GOAL	NEW CLUBS	DROPPED CLUBS
JULY/AUG/SEPT	1	0	2
OCT/NOV/DEC	0	0	0
JAN/FEB/MAR	0	2	0
APR/MAY/JUNE	1	0	0

Members			
RESULTS FOR 2020-2021			
QUARTER	MEMBER GROWTH NET GOAL	MEMBER GROWTH ACTUAL	DROPPED MEMBERS ACTUAL (including transfers)
JULY/AUG/SEPT	30	32	39
OCT/NOV/DEC	40	31	28
JAN/FEB/MAR	65	62	20
APR/MAY/JUNE	30	25	10

GOALS AND ACTUAL NEW CLUBS CUMULATIVE



GOALS AND ACTUAL MEMBERS CUMULATIVE



DROPPED CLUBS: 2	28 CLUBS OF 52 ADDED 1 OR MORE NEW MEMBERS	GENDER DISTRIBUTION MALE 732 (58.84%) FEMALE 512 (41.16%)
DROPPED MEMBERS	CLICK HERE FOR CUMULATIVE MEMBERSHIP DATA	TOTAL FAMILY UNIT MEMBERS 340 FAMILY MEMBERS PAYING HALF DUES 175
DECEASED 17 CLUB CANCELLED 0 OTHER 80 TOTAL 97		